

**U.S. Army Corps of Engineers
Fiscal Year 2022
Handshake Program Application**

Please review instructions before completing application!

Corps Lake/River Project Name: **Beltzville Dam**

District / Division:**CENAP-OPN-Z**

Handshake Proposal Title: **Invasive Species Portable Wash Station: Stopping Aquatic Hitchhikers**

Corps POC Name:**Joshua E. Dinko**

Telephone:(**610**) **377 – 0332** ext. **3**

E-Mail: **joshua.e.dinko@usace.army.mil**

A. Checklist:

1. Will the Handshake funds be spent on Corps facilities and resources that are being fully maintained by the Corps? (not in outgranted parks) Yes No
 2. Will the Challenge Partnership agreement be with a non-federal public or private entity(ies)? Yes No
 3. Is the proposed activity within current authorities and contained in the annual or 5-year work plan in the approved lake project OMP? Yes No
 4. Have all of the NEPA requirements been considered for this project? Yes No
 5. I am aware the Challenge Partnership Agreement must be reviewed and approved by District Office of Counsel before sending to HQUSACE. Yes No
 6. If the full funding amount requested is not available, could a portion of this Handshake Project be completed with partial funding? Yes No
 7. I am aware that all government funds must be spent in accordance with FAR, DFAR and AFAR contracting laws and regulations, and that Handshake funds cannot be provided to the partner(s). Yes No
 8. Did you participate in a Handshake webinar in 2021 or review a 2020 Handshake webinar on the Gateway? Yes No
-

B. Handshake Funding Request (maximum \$25,000): \$22,600

C. Corps Foundation Bonus: (maximum \$5,000): \$5,000

Separate bonus funding provided by the Corps Foundation for a selected Handshake Project.

D. Incentive Points Category: Check the appropriate box if your application qualifies to receive bonus points on the evaluation score.

This project will be support youth participation in natural resources and outdoor recreation. (100 points).

This project will support diversity, equity and inclusion goals to increase access to a quality recreation experience which includes a safe and healthful environment for a diverse population. This project will help the

Corps conserve natural resources and provide recreation opportunities that contribute to the quality of American life. (100 points).

E. Describe your partnership and the proposed Handshake Partnership Project:

Project applications will be evaluated on the categories below. Please complete each section as appropriate.

Summary Statement:

Beltzville Dam is a USACE owned multipurpose flood control project located in the Delaware River Basin and is operated by the Philadelphia District. Congressionally authorized for flood control, water supply, low flow augmentation, its secondary purposes also include recreation and water quality. Recently during water quality sampling efforts, it was determined that an invasive species called hydrilla was present in the lake. Water quality and recreational activities could be impacted long term if the condition worsens, but the immediate concern is that Beltzville Dam will become a source of spreading this invasive throughout the region. With the use of portable wash stations and help from partnering agencies, USACE is seeking a long-term sustainable solution to stop aquatic hitchhikers through environmental stewardship efforts, while providing public education and transparent communication on the topic. This will ultimately preserve the recreation and water quality missions of Beltzville Dam, help prevent the introduction of other invasive species at Beltzville, and preserve water quality at other bodies of water located within the region, including other USACE Philadelphia and Baltimore District owned dams in Pennsylvania.

Handshake Funding Cost Break Down:

The Pennsylvania Department of Conservation and Natural Resources (PA DCNR) and USACE have partnered to establish two decontamination sites at each of the public boat launches at Beltzville Dam since the last Handshake application was submitted. This consists of collection boxes, roadside cleaning tools, and aquatic hitchhiker signage. The Handshake Funding Costs will simply consist of a mobile watercraft decontamination unit priced at \$22,600 that can be transported and deployed at two different launch sites, and USACE mission signage that will be mounted to the unit. PA DCNR and Friends of Beltzville State Park will provide labor and in-kind services by providing and staff to operate the wash station, transporting and deploying it for use, and filling the water tanks as needed. The PA Fish and Boat Commission and PA Lake Management Society will be providing educational tools and material for handouts to the general public and recreational user groups.

Longevity / O&M description:

Through the use of partner's assistance, this project will be sustainable both financially and environmentally. Future costs will mainly consist of labor to man the wash station, properly dispose of collection box matter, and provide educational value to the public. This will be provided by PA Department of Conservation and Natural Resource permanent staff members and ranger interns. The wash station will also enhance PA DCNR's environmental stewardship efforts supporting their own PA Clean Boat Clean Water Initiative. Preventative maintenance costs on the portable unit will be provided by USACE. The Friends of Beltzville State Park, a Nationally recognized volunteer group will assist as needed in various roles. The PA Fish and Boat Commission and PA Lake Management Society will provide additional reference material. The expected useful life of the wash station is 10 - 15 years.

Partnership Value:

It would be extremely difficult for this project to become a reality let alone effective in carrying out the desired benefits without assistance through partnering. The proposed plan is to purchase the power wash station, and have trained educators and operators provided by PA DCNR, to operate and maintain the station from Saturday of Memorial Day weekend, through Labor Day Monday. The station will be opened at a minimum all weekends and major Holidays between this time period. Additional weekdays will be added if warranted depending on weather and boat traffic. Due to USACE staff limitations and non-weekend work schedules, it would be impossible to execute this mission without additional resources, therefore reliance on the partnership value is imperative. The Friends of Beltzville State Park will supplement the manpower required to operate the wash station, and the PA Fish and Boat Commission and PA Lake Management Society will furnish additional educational reference

material that will be provided to end users. It is important to note that all partners are dedicated to preserving and protecting our water resource by preventing the spread of aquatic invasive species.

Recreational Benefit:

Beltzville Dam is a highly visited recreation area boasting over 800,000 visitors in FY20. Of that total, approximately 40% participated in some sort of watercraft related activity including recreational boating, skiing, and fishing. The portable wash station will be placed at the heaviest used launch sites at Beltzville Lake and will capture the majority of the recreational boaters and fisherman that comprise this total. The lake itself is a valuable resource and critical to the local economy in Lehighton and surrounding area. Preserving the recreation mission at the lake is a goal of all partnering agencies. By preventing aquatic hitchhikers, we are ensuring protection for long-term public access and use of our water resource.

Environmental Stewardship Value:

It is difficult to quantify the environmental stewardship value this project will provide. Not only will it have a positive impact at Beltzville Dam, but its benefits will have a positive impact on all water resources throughout the region. It is important to note the US Army Engineering Research and Development Center (ERDC) was considering sampling Beltzville Dam for genetic analysis of hydrilla this past fiscal year. Although Beltzville Dam is known to inhabit hydrilla, there are numerous other invasive species found in the PA region that have not been introduced to the lake yet, but are of dire concern. Included on that list is Water Fringe (*Nymphoides peltata*), which was recently discovered downstream of Beltzville near Weissport, and will be sampled by ERDC later this calendar year. It is viable to work proactively to keep other invasive species from entering Beltzville Dam and to prevent further spreading of the existing known invasives throughout the region. The environmental stewardship value will ultimately stem from the preservation of water quality, a congressionally authorized mission at Beltzville Dam.

Communication & Education Value:

Education and communication are key in promoting awareness of environmental values, especially to the youth. The importance of environmental stewardship, protection, compliance, and restoration practices will be highlighted by the optics of the wash station, the partnership agencies and group interaction with the public, and the provided educational reference material and tools. Promoting public awareness is a very important step in stopping aquatic hitchhikers and this project will accomplish that. USACE will also provide signage on the machine highlighting the missions of Beltzville Lake to include water quality, both in lake and downstream, and how aquatic hitchhikers can impact the flood control mission as well by restricting intakes during the operation of the dam. Finally, the PA Fish and Boat Commission in addition to the PA Lake Management Society will be providing materials on the topic and preventative measures that should be followed throughout the State of Pennsylvania. With this joint partnership effort, the combined Federal, State, non-profit, and volunteer organizations will highlight and promote environmental stewardship values to all user groups and visitors of Beltzville Dam.

Innovativeness:

Beltzville Dam would be the first USACE Philadelphia District owned dam to purchase and test a boat washing system at a public launch site. Working in partnership with PA DCNR, this will provide the first proactive effort at Beltzville to bring State and Federal agencies together to work on preventing the spread of invasive species in an effort to preserve water quality throughout the region. This project supports the PA Clean Boat Clean Water Initiative and provides job experience for conservation students which are recreation and water stewardship based. This initiative also provides a unique opportunity to educate youth groups about environmental stewardship efforts as they participate in outdoor recreation.

Overall, this Handshake project contributes to the USACE Recreation Strategic Plan efforts highlighted by the value and roles of People and Water Meet, Safe and Accessible, Resource Protection, Healthy Communities,

Attractive Partner, and Geographic Distribution. Due to financial constraints, only one unit will be able to be purchased under this program. If this project is a success, an additional station may be sought.

Corps Foundation Bonus:

This project will support and promote the USACE National Resource Management program. If awarded the Corps Foundation Bonus, the money will be used to offset USACE expenses at the local project office that were not budgeted for.

Conclusion:

This project has the longevity with partnership resources to be a long term success and a pilot project for others to follow throughout the State of Pennsylvania. It will improve basic infrastructure at both launch sites at Beltzville Dam. It will educate the public and provide general awareness of the topic. Through environmental stewardship efforts, this project ensures protection for long-term public access and use of our water resource by stopping aquatic hitchhikers.

Double click on spreadsheet to access data entry fields and to enter Partner names.

You MUST enter partner names into the spreadsheet:

	Local Corps Office	Handshake Funds	PA DCNR	Friends of Beltzville State Park	PA Fish and Boat Commission	PA Lake Management Society
Salaries	\$5,000	N/A	\$25,000	\$0	\$0	\$0
Travel	\$0	N/A	\$1,000	\$0	\$0	\$0
Materials and Supplies	\$500	\$22,600	\$1,000	\$0	\$2,000	\$1,000
Equipment Use	\$250	\$0	\$2,000	\$0	\$0	\$0
Funds Contributed	N/A	N/A	\$0	\$0	\$0	\$0
Personal Property	N/A	N/A	\$0	\$0	\$0	\$0
Volunteer	N/A	N/A	\$0	\$3,000	\$0	\$0
In-Kind Services	N/A	N/A	\$12,000	\$0	\$0	\$0
Other (explain below)	\$0	\$0	\$0	\$0	\$0	\$0
Total	\$5,750	\$22,600	\$41,000	\$3,000	\$2,000	\$1,000
Share of Total Cost	7.6%	30.0%	54.4%	4.0%	2.7%	1.3%
	37.6%					

	Partner 5	Partner 6	Partner 7	Partner 8	Partner 9	Partner 10
Salaries	\$0	\$0	\$0	\$0	\$0	\$0
Travel	\$0	\$0	\$0	\$0	\$0	\$0
Materials and Supplies	\$0	\$0	\$0	\$0	\$0	\$0
Equipment Use	\$0	\$0	\$0	\$0	\$0	\$0
Funds Contributed	\$0	\$0	\$0	\$0	\$0	\$0
Personal Property	\$0	\$0	\$0	\$0	\$0	\$0
Volunteer	\$0	\$0	\$0	\$0	\$0	\$0
In-Kind Services	\$0	\$0	\$0	\$0	\$0	\$0
Other (explain below)	\$0	\$0	\$0	\$0	\$0	\$0
Total	\$0	\$0	\$0	\$0	\$0	\$0
Share of Total Cost	0.0%	0.0%	0.0%	0.0%	0.0%	0

	Partner 11	Partner 12	Partner 13	Partner 14	Partner 15	Total
Salaries	\$0	\$0	\$0	\$0	\$0	\$30,000
Travel	\$0	\$0	\$0	\$0	\$0	\$1,000
Materials and Supplies	\$0	\$0	\$0	\$0	\$0	\$27,100
Equipment Use	\$0	\$0	\$0	\$0	\$0	\$2,250
Funds Contributed	\$0	\$0	\$0	\$0	\$0	\$0
Personal Property	\$0	\$0	\$0	\$0	\$0	\$0
Volunteer	\$0	\$0	\$0	\$0	\$0	\$3,000
In-Kind Services	\$0	\$0	\$0	\$0	\$0	\$12,000
Other (explain below)	\$0	\$0	\$0	\$0	\$0	\$0
Total	\$0	\$0	\$0	\$0	\$0	\$75,350
Share of Total Cost	0.0%	0.0%	0.0%	0.0%	0.0%	100%

Explanations: For clarification, the Handshake funds will be used to purchase the unit as spelled out in the cost under Section E. PA DCNR will be providing in-kind services for site preparation, water supply, maintenance, and operation of the unit at two separate public launch sites. PA DCNR will be operating and maintaining the wash station during the specified time periods, at a minimum weekends and Holidays starting Saturday of Memorial Day weekend, through Labor Day Monday. Friends of Beltzville State Park volunteer group will be utilized as needed. PA DCNR will also be educating and communicating with the public on this topic and will provide reference material as part of their PA Clean Boat Clean Water Initiative. In-kind services also include the

proper disposal of material gathered daily in the collection boxes. PA DCNR will perform the preventative maintenance on the portable wash station. USACE will winterize the unit, and provide storage in the offseason. Labor rates, salaries, volunteer information, and in kind services were estimated for one fiscal year of operation. Supply estimates for educational material were provided for the PA Fish and Boat Commission and PA Lake Management Society. Although this is geared at being a one time purchase, this unit is expected to have a useful life of 10 -15 years.

1. PROJECT INFORMATION

Project Name: **USACE Beltzville Reservoir Boat Wash Facilities Site 1 of 2**

Date of Review: **9/16/2019 09:42:26 AM**

Project Category: **Habitat Conservation and Restoration, Control of invasive or exotic plant species**

Project Area: **4.52 acres**

County(s): **Carbon**

Township/Municipality(s): **TOWAMENSING**

ZIP Code: **18235**

Quadrangle Name(s): **PALMERTON**

Watersheds HUC 8: **Lehigh**

Watersheds HUC 12: **Beltzville Lake-Pohopoco Creek**

Decimal Degrees: **40.863525, -75.618402**

Degrees Minutes Seconds: **40° 51' 48.6895" N, 75° 37' 6.2464" W**

2. SEARCH RESULTS

Agency	Results	Response
PA Game Commission	No Known Impact	No Further Review Required
PA Department of Conservation and Natural Resources	No Known Impact	No Further Review Required
PA Fish and Boat Commission	No Known Impact	No Further Review Required
U.S. Fish and Wildlife Service	No Known Impact	No Further Review Required

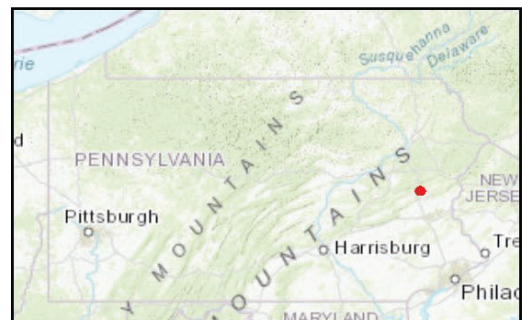
As summarized above, Pennsylvania Natural Diversity Inventory (PNDI) records indicate no known impacts to threatened and endangered species and/or special concern species and resources within the project area. Therefore, based on the information you provided, no further coordination is required with the jurisdictional agencies. This response does not reflect potential agency concerns regarding impacts to other ecological resources, such as wetlands.

USACE Beltzville Reservoir Boat Wash Facilities Site 1 of 2



- Project Boundary
- Buffered Project Boundary

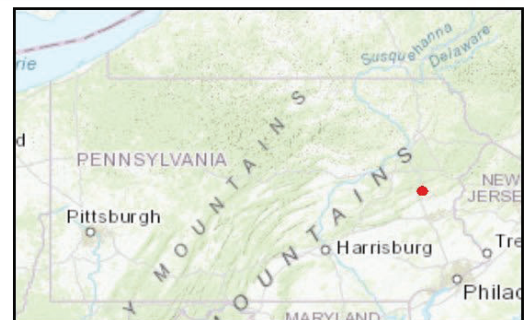
Service Layer Credits: Sources: Esri, HERE, DeLorme, Intermap, increment P Corp., GEBCO, USGS, FAO, NPS, NRCAN, GeoBase, IGN, Kadaster NL, Ordnance Survey, Esri Japan, METI, Esri China (Hong Kong), swisstopo, MapmyIndia, © OpenStreetMap contributors, and the GIS User Community
Esri, HERE, Garmin, (c) OpenStreetMap contributors, and the GIS user community



USACE Beltzville Reservoir Boat Wash Facilities Site 1 of 2



- Project Boundary
- Buffered Project Boundary



Service Layer Credits: Sources: Esri, HERE, DeLorme, Intermap, increment P Corp., GEBCO, USGS, FAO, NPS, NRCAN, GeoBase, IGN, Kadaster NL, Ordnance Survey, Esri Japan, METI, Esri China (Hong Kong), swisstopo, MapmyIndia, © OpenStreetMap contributors, and the GIS User Community
Sources: Esri, HERE, Garmin, Intermap, increment P Corp., GEBCO, USGS, FAO, NPS,

3. AGENCY COMMENTS

Regardless of whether a DEP permit is necessary for this proposed project, any potential impacts to threatened and endangered species and/or special concern species and resources must be resolved with the appropriate jurisdictional agency. In some cases, a permit or authorization from the jurisdictional agency may be needed if adverse impacts to these species and habitats cannot be avoided.

These agency determinations and responses are **valid for two years** (from the date of the review), and are based on the project information that was provided, including the exact project location; the project type, description, and features; and any responses to questions that were generated during this search. If any of the following change: 1) project location, 2) project size or configuration, 3) project type, or 4) responses to the questions that were asked during the online review, the results of this review are not valid, and the review must be searched again via the PNDI Environmental Review Tool and resubmitted to the jurisdictional agencies. The PNDI tool is a primary screening tool, and a desktop review may reveal more or fewer impacts than what is listed on this PNDI receipt. The jurisdictional agencies **strongly advise against** conducting surveys for the species listed on the receipt prior to consultation with the agencies.

PA Game Commission

RESPONSE:

No Impact is anticipated to threatened and endangered species and/or special concern species and resources.

PA Department of Conservation and Natural Resources

RESPONSE:

No Impact is anticipated to threatened and endangered species and/or special concern species and resources.

PA Fish and Boat Commission

RESPONSE:

No Impact is anticipated to threatened and endangered species and/or special concern species and resources.

U.S. Fish and Wildlife Service

RESPONSE:

No impacts to **federally** listed or proposed species are anticipated. Therefore, no further consultation/coordination under the Endangered Species Act (87 Stat. 884, as amended; 16 U.S.C. 1531 et seq. is required. Because no take of federally listed species is anticipated, none is authorized. This response does not reflect potential Fish and Wildlife Service concerns under the Fish and Wildlife Coordination Act or other authorities.

4. DEP INFORMATION

The Pa Department of Environmental Protection (DEP) requires that a signed copy of this receipt, along with any required documentation from jurisdictional agencies concerning resolution of potential impacts, be submitted with applications for permits requiring PNDI review. Two review options are available to permit applicants for handling PNDI coordination in conjunction with DEP's permit review process involving either T&E Species or species of special concern. Under sequential review, the permit applicant performs a PNDI screening and completes all coordination with the appropriate jurisdictional agencies prior to submitting the permit application. The applicant will include with its application, both a PNDI receipt and/or a clearance letter from the jurisdictional agency if the PNDI Receipt shows a Potential Impact to a species or the applicant chooses to obtain letters directly from the jurisdictional agencies. Under concurrent review, DEP, where feasible, will allow technical review of the permit to occur concurrently with the T&E species consultation with the jurisdictional agency. The applicant must still supply a copy of the PNDI Receipt with its permit application. The PNDI Receipt should also be submitted to the appropriate agency according to directions on the PNDI Receipt. The applicant and the jurisdictional agency will work together to resolve the potential impact(s). See the DEP PNDI policy at <https://conservationexplorer.dcnr.pa.gov/content/resources>.

5. ADDITIONAL INFORMATION

The PNDI environmental review website is a preliminary screening tool. There are often delays in updating species status classifications. Because the proposed status represents the best available information regarding the conservation status of the species, state jurisdictional agency staff give the proposed statuses at least the same consideration as the current legal status. If surveys or further information reveal that a threatened and endangered and/or special concern species and resources exist in your project area, contact the appropriate jurisdictional agency/agencies immediately to identify and resolve any impacts.

For a list of species known to occur in the county where your project is located, please see the species lists by county found on the PA Natural Heritage Program (PNHP) home page (www.naturalheritage.state.pa.us). Also note that the PNDI Environmental Review Tool only contains information about species occurrences that have actually been reported to the PNHP.

6. AGENCY CONTACT INFORMATION

PA Department of Conservation and Natural Resources

Bureau of Forestry, Ecological Services Section
400 Market Street, PO Box 8552
Harrisburg, PA 17105-8552
Email: RA-HeritageReview@pa.gov

U.S. Fish and Wildlife Service

Pennsylvania Field Office
Endangered Species Section
110 Radnor Rd; Suite 101
State College, PA 16801
NO Faxes Please

PA Fish and Boat Commission

Division of Environmental Services
595 E. Rolling Ridge Dr., Bellefonte, PA 16823
Email: RA-FBPACENOTIFY@pa.gov

PA Game Commission

Bureau of Wildlife Habitat Management
Division of Environmental Planning and Habitat Protection
2001 Elmerton Avenue, Harrisburg, PA 17110-9797
Email: RA-PGC_PNDI@pa.gov
NO Faxes Please

7. PROJECT CONTACT INFORMATION

Name: Gregory Wacik, Ecologist
Company/Business Name: USACE Philadelphia District
Address: 100 Penn Square East
City, State, Zip: Philadelphia, PA, 19107
Phone: (215) 656-6562 Fax: ()
Email: Gregory.A.Wacik@usace.army.mil

8. CERTIFICATION

I certify that ALL of the project information contained in this receipt (including project location, project size/configuration, project type, answers to questions) is true, accurate and complete. In addition, if the project type, location, size or configuration changes, or if the answers to any questions that were asked during this online review change, I agree to re-do the online environmental review.

applicant/project proponent signature

date

1. PROJECT INFORMATION

Project Name: **USACE Beltzville Reservoir Boat Wash Facility Site 2 of 2**

Date of Review: **9/16/2019 09:48:28 AM**

Project Category: **Habitat Conservation and Restoration, Control of invasive or exotic plant species**

Project Area: **3.95 acres**

County(s): **Carbon**

Township/Municipality(s): **TOWAMENSING**

ZIP Code: **18235**

Quadrangle Name(s): **PALMERTON**

Watersheds HUC 8: **Lehigh**

Watersheds HUC 12: **Beltzville Lake-Pohopoco Creek**

Decimal Degrees: **40.873788, -75.574738**

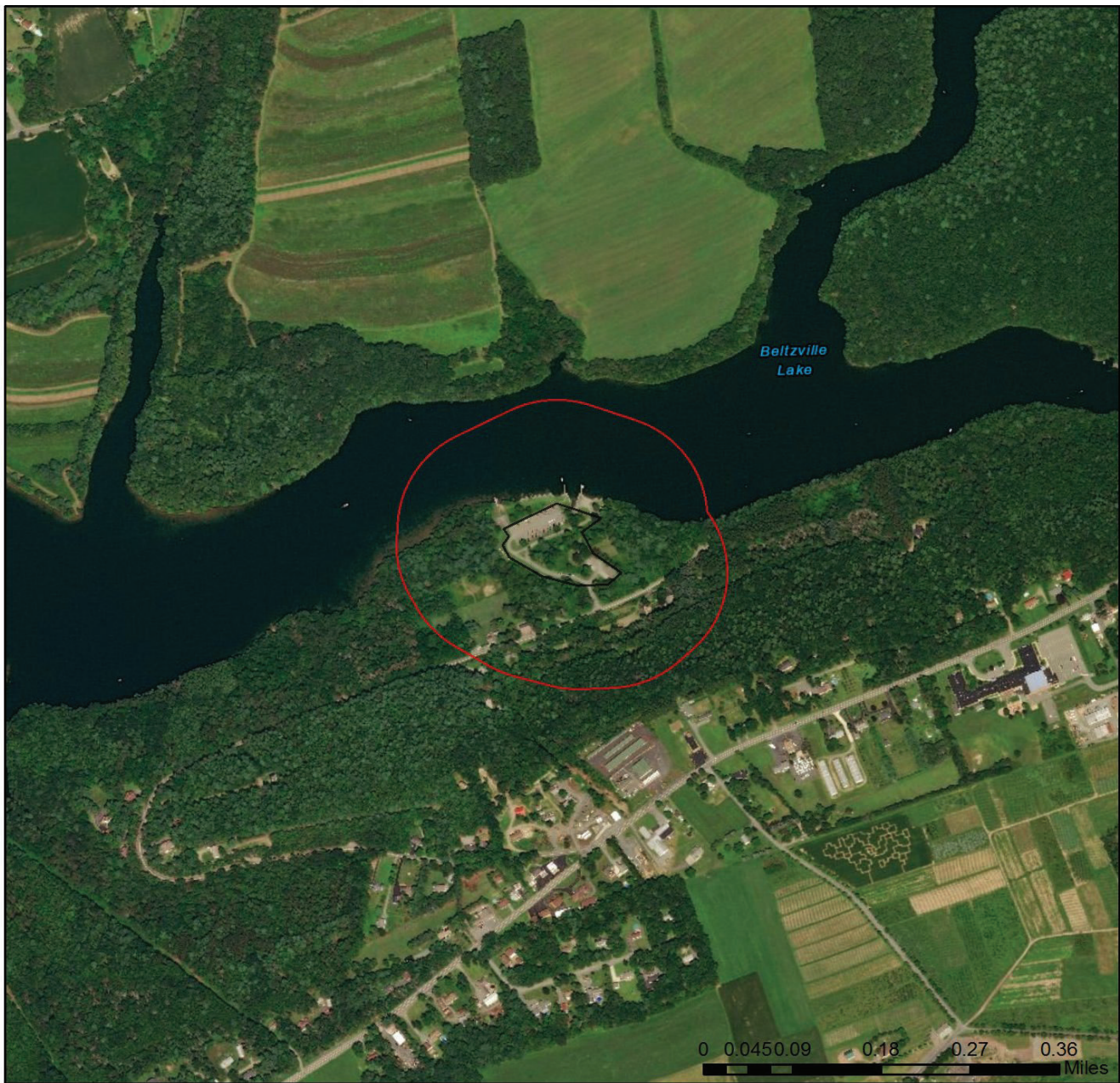
Degrees Minutes Seconds: **40° 52' 25.6365" N, 75° 34' 29.573" W**

2. SEARCH RESULTS

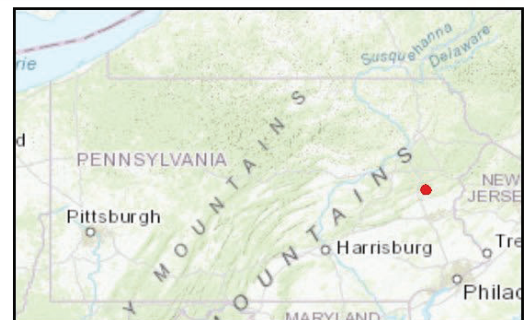
Agency	Results	Response
PA Game Commission	No Known Impact	No Further Review Required
PA Department of Conservation and Natural Resources	No Known Impact	No Further Review Required
PA Fish and Boat Commission	No Known Impact	No Further Review Required
U.S. Fish and Wildlife Service	No Known Impact	No Further Review Required

As summarized above, Pennsylvania Natural Diversity Inventory (PNDI) records indicate no known impacts to threatened and endangered species and/or special concern species and resources within the project area. Therefore, based on the information you provided, no further coordination is required with the jurisdictional agencies. This response does not reflect potential agency concerns regarding impacts to other ecological resources, such as wetlands.

USACE Beltzville Reservoir Boat Wash Facility Site 2 of 2

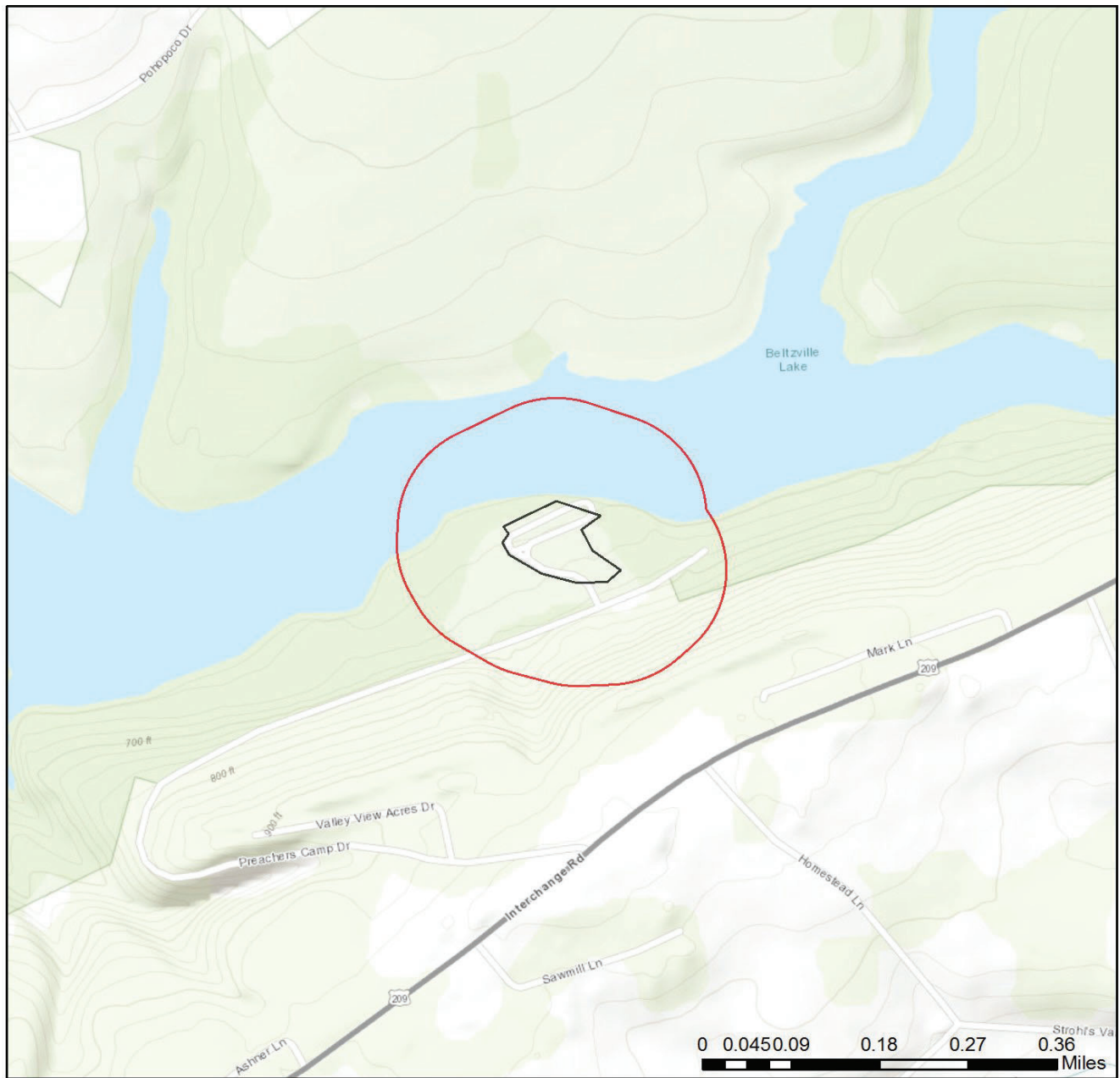


- Project Boundary
- Buffered Project Boundary



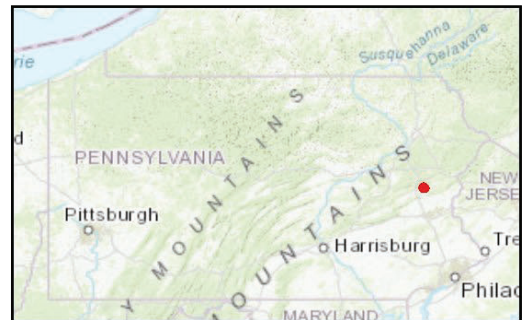
Service Layer Credits: Sources: Esri, HERE, DeLorme, Intermap, increment P Corp., GEBCO, USGS, FAO, NPS, NRCAN, GeoBase, IGN, Kadaster NL, Ordnance Survey, Esri Japan, METI, Esri China (Hong Kong), swisstopo, MapmyIndia, © OpenStreetMap contributors, and the GIS User Community
Esri, HERE, Garmin, (c) OpenStreetMap contributors, and the GIS user community

USACE Beltzville Reservoir Boat Wash Facility Site 2 of 2



- Project Boundary
- Buffered Project Boundary

Service Layer Credits: Sources: Esri, HERE, DeLorme, Intermap, increment P Corp., GEBCO, USGS, FAO, NPS, NRCAN, GeoBase, IGN, Kadaster NL, Ordnance Survey, Esri Japan, METI, Esri China (Hong Kong), swisstopo, MapmyIndia, © OpenStreetMap contributors, and the GIS User Community
Sources: Esri, HERE, Garmin, Intermap, increment P Corp., GEBCO, USGS, FAO, NPS,



3. AGENCY COMMENTS

Regardless of whether a DEP permit is necessary for this proposed project, any potential impacts to threatened and endangered species and/or special concern species and resources must be resolved with the appropriate jurisdictional agency. In some cases, a permit or authorization from the jurisdictional agency may be needed if adverse impacts to these species and habitats cannot be avoided.

These agency determinations and responses are **valid for two years** (from the date of the review), and are based on the project information that was provided, including the exact project location; the project type, description, and features; and any responses to questions that were generated during this search. If any of the following change: 1) project location, 2) project size or configuration, 3) project type, or 4) responses to the questions that were asked during the online review, the results of this review are not valid, and the review must be searched again via the PNDI Environmental Review Tool and resubmitted to the jurisdictional agencies. The PNDI tool is a primary screening tool, and a desktop review may reveal more or fewer impacts than what is listed on this PNDI receipt. The jurisdictional agencies **strongly advise against** conducting surveys for the species listed on the receipt prior to consultation with the agencies.

PA Game Commission

RESPONSE:

No Impact is anticipated to threatened and endangered species and/or special concern species and resources.

PA Department of Conservation and Natural Resources

RESPONSE:

No Impact is anticipated to threatened and endangered species and/or special concern species and resources.

PA Fish and Boat Commission

RESPONSE:

No Impact is anticipated to threatened and endangered species and/or special concern species and resources.

U.S. Fish and Wildlife Service

RESPONSE:

No impacts to **federally** listed or proposed species are anticipated. Therefore, no further consultation/coordination under the Endangered Species Act (87 Stat. 884, as amended; 16 U.S.C. 1531 et seq. is required. Because no take of federally listed species is anticipated, none is authorized. This response does not reflect potential Fish and Wildlife Service concerns under the Fish and Wildlife Coordination Act or other authorities.

4. DEP INFORMATION

The Pa Department of Environmental Protection (DEP) requires that a signed copy of this receipt, along with any required documentation from jurisdictional agencies concerning resolution of potential impacts, be submitted with applications for permits requiring PNDI review. Two review options are available to permit applicants for handling PNDI coordination in conjunction with DEP's permit review process involving either T&E Species or species of special concern. Under sequential review, the permit applicant performs a PNDI screening and completes all coordination with the appropriate jurisdictional agencies prior to submitting the permit application. The applicant will include with its application, both a PNDI receipt and/or a clearance letter from the jurisdictional agency if the PNDI Receipt shows a Potential Impact to a species or the applicant chooses to obtain letters directly from the jurisdictional agencies. Under concurrent review, DEP, where feasible, will allow technical review of the permit to occur concurrently with the T&E species consultation with the jurisdictional agency. The applicant must still supply a copy of the PNDI Receipt with its permit application. The PNDI Receipt should also be submitted to the appropriate agency according to directions on the PNDI Receipt. The applicant and the jurisdictional agency will work together to resolve the potential impact(s). See the DEP PNDI policy at <https://conservationexplorer.dcnr.pa.gov/content/resources>.

5. ADDITIONAL INFORMATION

The PNDI environmental review website is a preliminary screening tool. There are often delays in updating species status classifications. Because the proposed status represents the best available information regarding the conservation status of the species, state jurisdictional agency staff give the proposed statuses at least the same consideration as the current legal status. If surveys or further information reveal that a threatened and endangered and/or special concern species and resources exist in your project area, contact the appropriate jurisdictional agency/agencies immediately to identify and resolve any impacts.

For a list of species known to occur in the county where your project is located, please see the species lists by county found on the PA Natural Heritage Program (PNHP) home page (www.naturalheritage.state.pa.us). Also note that the PNDI Environmental Review Tool only contains information about species occurrences that have actually been reported to the PNHP.

6. AGENCY CONTACT INFORMATION

PA Department of Conservation and Natural Resources

Bureau of Forestry, Ecological Services Section
400 Market Street, PO Box 8552
Harrisburg, PA 17105-8552
Email: RA-HeritageReview@pa.gov

U.S. Fish and Wildlife Service

Pennsylvania Field Office
Endangered Species Section
110 Radnor Rd; Suite 101
State College, PA 16801
NO Faxes Please

PA Fish and Boat Commission

Division of Environmental Services
595 E. Rolling Ridge Dr., Bellefonte, PA 16823
Email: RA-FBPACENOTIFY@pa.gov

PA Game Commission

Bureau of Wildlife Habitat Management
Division of Environmental Planning and Habitat Protection
2001 Elmerton Avenue, Harrisburg, PA 17110-9797
Email: RA-PGC_PNDI@pa.gov
NO Faxes Please

7. PROJECT CONTACT INFORMATION

Name: Gregory Wacik, Ecologist
Company/Business Name: USACE, Philadelphia District
Address: 100 Penn Square East
City, State, Zip: Philadelphia, PA, 19107
Phone: (215) 656-6561 Fax: ()
Email: Gregory.A.Wacik@usace.army.mil

8. CERTIFICATION

I certify that ALL of the project information contained in this receipt (including project location, project size/configuration, project type, answers to questions) is true, accurate and complete. In addition, if the project type, location, size or configuration changes, or if the answers to any questions that were asked during this online review change, I agree to re-do the online environmental review.

applicant/project proponent signature

date

Total Inspection Records:

172

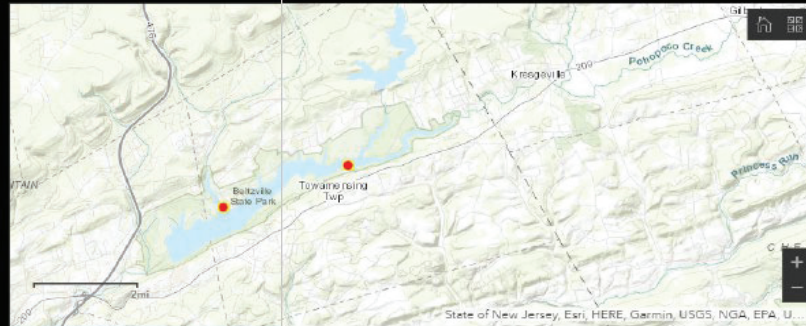
Committed to CD2:

151

Total Inspection Records with Invasive(s) Detected:

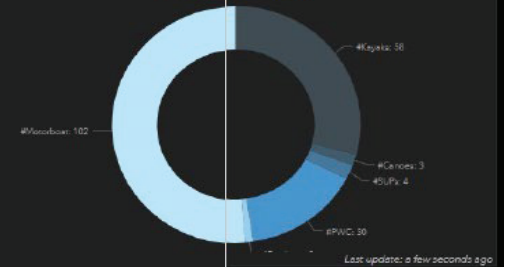
3

Records by Park

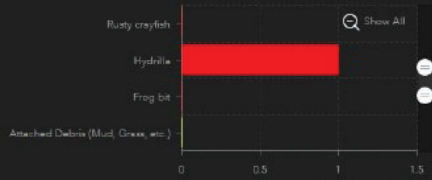


Records by Type of Watercraft

Type of Watercraft:



Organism(s) Detected

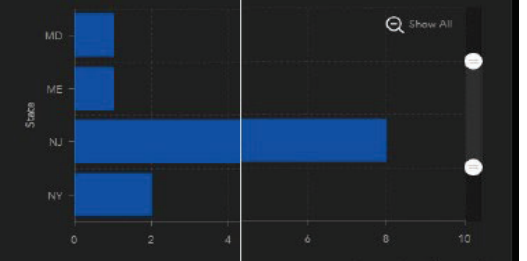


Records by Boat Launch Site



Records by State of Boat Registry

Watercraft State Registration



EQUIPMENT SPECIFICATIONS

WATERCRAFT DECON UNIT (AIS) ROYCE-TR-AIS TRAILER

TYPE

Hot water, high pressure, gasoline powered, stationary washer. Machine shall be capable of operating on fresh water. The machine shall be fully automatic with appropriate safety controls. This machine is ETL listed. Must conform to UL standard 1776 for pressure washers. All equipment built in an ISO-9001; 2008 registered factory.

GENERAL SPECIFICATIONS

Discharge	4.7 GPM
Pressure	3500 PSI
Pump RPM	1360
Engine	660 cc Electric Start Honda 4000
Generator	2000 Watts
BTU	450,000

ENGINE

The V-Twin, OHV, 4-stroke gasoline engine comes with a twin-barrel carburetor, air oil cooler, transistorized magneto ignition system and a 17 amp charging system. It clears strict CARB and EPA emissions regulations.

HIGH PRESSURE PUMP

Pump is tri-plex with ceramic plunger, oil bath crankcase with forged brass head, rated 3500 PSI (241 bar). Pump equipped with U-seals with temp rating of 185°F. Pump will be fed by a 110v 5 gpm feed pump.

GENERATOR

2000 watt, rated AC amps 33.3 / 16.7 volts 120 / 4-20 amp 120v nema 5-20 R3600 rpm.

UNLOADER VALVE

The pressure washer shall be equipped with a pressure trapping unloader valve rated for 4000 PSI (275 bar) and 7.8 GPM (30 lpm).

DRIVES/PUMPS

Belt drive system with cast iron pulley and adjustment bolts for proper belt tension and alignment. All belts to be covered by safety machine cover. All belts to be of notched design for maximum performance.

PUMP RAILS

Tru-track, 10 ga. steel; all welds are per ASTM welding standards, polyester powder coated paint for maximum corrosion resistance.

CONTROLS:

Machine shall have control panel with the following:

- Hour meter with tachometer and service monitor.
- Control panel can be relocated easily, from end to side of machine, to meet operator preference
- Lexan operating instructions and safety information in English, French and Spanish, attached by a high strength adhesive.
- Burner control switches.
- Adjustable thermostat
- Metered detergent valve
- Low fuel burner shut-off switch
- Engine choke
- Engine start-stop
- Engine choke



HEATING COIL

Schedule 80 A53 cold formed DuraCoil, with a material thickness of .147" (4 mm), overall length 110 ft. (34 m), pipe dimension .840" OD (21 mm), .546" ID (14 mm). Welding done to ASME standards. The heating coil shall be covered by an aluminized steel inner wrap and insulated with fiberfrax ceramic blanket, No. 6 density, 1" (3 cm) thick. Outer wrap of heating coil to be constructed of stainless steel.

SHUR-TEMP

(Customized for Aquatic Invasive Species) Shall be equipped with a device that maintains the operators set/determined temperatures at +/- 3 Degrees Fahrenheit.

BURNER ASSEMBLY

Continuous heating coil type, diesel/kerosene fired. TYPE: Class 6421 01 - fuel burning equipment (oil) - units - commercial/industrial. Forced air, automatic ignition, of sufficient capacity to provide 150°F (66°C) temperature rise. Burner fuel pump shall be equipped with safety fuel solenoid and regulator for safety and fuel pressure adjustment.

FUEL FILTER WATER SEPARATOR

The burner shall be equipped with a replacement element type fuel filter/ water separator with visual check and drain provision.

HIGH TEMPERATURE CONTROL

Shall be of the adjustable thermostat type located at discharge of coil with an operating temperature setting at 86°-302°F (30°-150°C). This safety control shall only control the fuel solenoid, not the burner assembly, for safety and dependability.

RUPTURE DISK

A rupture disk shall be located at the discharge port of the coil for over pressurization protection.

SAFETY FLOW SWITCH

Shall be located on cold water side of heating coil to prevent thermal damage. This safety switch shall be hermetically sealed to prevent moisture damage.

WATER SUPPLY SYSTEM

Reinforced polyethylene water tanks with automatic float shut-off valve shall be permanently mounted to machine to supply water to high pressure pump. A mesh in-line filter shall be installed to adequately protect the high pressure pump.

EASY!Force TRIGGER GUNS Patent Pending

Insulated safety shut-off spray gun supplied shall include ergonomic technology and be rated at 10.5 GPM (40 lpm), 5000 PSI (345 bar), and 300°F (149°C). Constructed from fiber-glass-reinforced polyester with brass and stainless valves and seats.

WANDS

A 42" (107 cm) angled stainless steel wand with built-in variable pressure control valve. Insulated grab handle and wand for operator protection.

HOSES

All hoses shall be 3/8" ID x 100' R2 double steel braid type meeting or exceeding SAE100R2 performance specification. Hose ends shall be equipped with swedge and safety protection collars; 24" on operator gun side. Rated at 5800 PSI at 275°F.

HOSE REELS

Two hose reels shall be supplied. Heavy gauge construction, gloss powder coat, high pressure double swivel seals; one for high pressure and one for low pressure.

NOZZLES

As required by UMPS's III (Uniform Minimum Protocols and Standards) the appropriate, white color, identifiable high pressure nozzles for single spray gun operation shall be supplied at 40° flat spray pattern. The nozzles shall be of a hardened 420 stainless steel material, with an interlock coupler nipple made of annealed 303 stainless steel with 80 Rockwell hardness rating.

CONNECTIONS

Quick coupler with stainless steel support balls, 4,000 PSI rated.

AQUATIC INVASIVE SPECIES DECONTAMINATION TOOLS

- 1= Thru Hull Device, Insulated w/ AIS-QC Part # ROYCE-AIS-001
- 1= Under Hull Device, 4 Nozzle w/ AIS-QC Part # ROYCE-AIS-003
- 1= Water Craft Diffuser w/ AIS-QC Part # ROYCE-AIS-005
- 1= Personal Watercraft Tool, Female w/ AIS-QC Part # ROYCE-AIS-007
- 1= Personal Watercraft Tool, Male w/ AIS-QC Part # ROYCE-AIS-009
- 1= AIS Flush, Inboard Hi-Temp Part # ROYCE-AIS-011
- 1= AIS Flush, Pro Hi-Temp Part # ROYCE-AIS-013
- 1= Muffs, Rectangle Hi-Temp Part # ROYCE-AIS-015
- 1= Muffs, Round Hi-Temp Part # ROYCE-AIS-017
- 1= Muffs, Volvo-Penta Hi-Temp Part # ROYCE-AIS-019
- 1= Muffs, Mercury Hi-Temp Part # ROYCE-AIS-021
- 1= Muffs, Dual Feed Hi-Temp Part # ROYCE-AIS-023
- 1= EZ Force Gun, with AIS-QC Part # ROYCE-AIS-025
- 1= Whip Hose, 3' with AIS-QC Part # ROYCE-AIS-027

ONBOARD AIS TOOL STORAGE

Shall be equipped with lockable tool box for storage of the Aquatic Invasive Species (AIS) Tools.

FRAME

Machine shall be surrounded/protected on all sides by a welded steel 1-1/2" tube frame/cage assembly. Components to be located for service/inspection accessibility. Frame is polyester powder coated for maximum corrosion resistance. Fuel tank to be enclosed in the frame as well. The frame and power platform to be separated by vibration isolators. Stainless steel wrap.

LIGHTS

Brake, signal and marker lights are recessed in the frame and are 12 Volt DOT approved. License plate holder houses an indicator light to meet DOT regulations.

AXLES / SPRINGS / BRAKES

Dual factory installed Leaf spring axles are rated at 3500 lbs class II. Factory installed dual electric brakes. "Break-away" kit includes a stand-alone 12V battery.

TIRES

205 / 75 / R15" tires with 15" White steel rims, factory installed and spare tire configuration.

JACK

The 1500 lbs screw-type jack rotates from the towing position to the vertical position by operating the spring-loaded locking mechanism. An enclosed tube prevents sand and dirt from coming in contact with the precision miter gears and the heavy-duty Acme screw. It has a bright, zinc-plated finish, as well as a polypropylene wheel and four-bolt mounting system.

TONGUE COUPLER

2-inch or 2 5/16-inch ball coupler for quick and easy hook up of the trailer. Dual 5/16-inch chains are also included for additional safety.

WATER TANKS

Trailer features a 330-gallon white High-Density Polyethylene Water Tank comes standard with the trailer and features a 12-inch access port plus a 1 1/2-inch drain valve, 3/4-inch float valve and a 50-mesh inlet strainer and large 2" FPT drain fitting. Tank walls are translucent for level viewing and equipped with gallon indicators Tank includes a durable inlet float valve to prevent overfilling and an extra 3/4" bulkhead for field installed pump bypass.

WATER FILTER

A 1" T-Line strainer with 20 mesh stainless screen is mounted in between the tank and pressure washer.

WAND STORAGE

Wand storage bracket with locking latch is located behind the wheel well.

FUEL TANKS

Gasoline (10 gallon) and diesel (10 gallon) tanks feature elevated fuel lines to prevent debris in fuel from causing damage.

AVAILABLE OPTIONS (Trailer)

- Hydraulic Surge Breaks with hydraulic break away kit
- Front rock guard
- 15" Chrome steel rims
- 2-5/16" Ball hitch coupler

TRAILER CERTIFICATION

Trailer to be certified to the NATM and NHTSA requirements.

AQUATIC INVASIVE SPECIES DECALS

Trailer shall be affixed with two each of the following vinyl decals:

"Clean * Drain * Dry"

"Watercraft Decontamination Unit"

"Department Logos" as determined by Owner

DIMENSIONS

Trailer Only: 178"L x 80"W x 62"H
Pressure Washer Only: 48"L x 32"W x 44"H